

SuniCam User Guide



Contents

About Suni Digital Intra-oral Camera	3
About SuniCam Utility Software	4
1. Introduction to SuniCam	5
1.1 Camera Specification	5
1.2 System Requirement	6
1.3 SuniCam System Component List	6
2. System Setup	7
2.1 Camera Features	7
2.2 Setup the Camera hardware	8
2.3 Install the Camera Driver	9
2.4 Install SuniCam Utility Software	11
2.5 Install DirectX9.0	13
3. Camera Operation	16
3.1 Launch the Utility Software	16
3.2 Operation Procedure	16
3.3 Operate SuniCam Utility Software	16
3.3.1 Turn the Camera On and off	16
3.3.2 Setup the Live Video Preview	17
3.3.3 Capture the Snapshot	19
3.3.4 Open existing images	20
3.3.5 Save the images	21
3.3.6 Work with still images	22
Appendix i. Use Camera sheaths	24
Appendix ii. Safety and Handling instructions for SuniCam	25
Appendix iii. Warranty	28
Appendix iv. Warranty registration sheet	30

About Suni Digital Intra-oral Camera

Congratulations on choosing SUNI digital intra-oral camera!

The Suni USB Intra-oral camera is designed for routine use in dental operatories for documentation and patient education purpose. SuniCam provides you with high quality real-time digital video and still images in a clinical environment. The real time full motion video and picture snapshots can be displayed instantly in the SuniCam software at the dentist operatory. The digital images are captured using the state-of-art CCD digital imaging technology. The Suni USB Intra-oral camera is a true plug and play device for your desktop or laptop, convenient and portable. No extra power source is needed besides the USB cable. Still images can be captured at any time from the simple click on a button in the software or from the hand piece.

The Suni USB camera is able to display the video and still image at a variety of formats and resolutions. The resolution of full motion video ranges from 640x480 to 160x120. The still image offers up to mega-pixel resolution. The frame rate varies from 5fps to 30fps.

The camera can be conveniently positioned in the patient's mouth in almost any angle to obtain a high quality video and image of the teeth. The camera is comfortable to hold thanks to the ergonomic design. It is very light weight. The only light source needed to obtain a high quality image is the light source around the lens. The camera size is small and easily fits into the pocket.

The video and images from the camera provide valuable diagnostic information to the dentist as well as educational value to the patient.

Installation and setup of SuniCam system requires little work and computer knowledge. It is even easier to use the software. The user friendly and proprietary software integrates with the camera seamlessly. Suni USB camera will provide you a whole new experience for your practice.

About the SuniCam software

This user guide describes the SuniCam utility software which is intended to integrate Suni USB camera in a stand alone fashion. It is a fully functional program for live video preview, still image acquisition as well as archiving.

SuniCam Application software will be tailored to the dental practice. For detailed information and update, please contact your local SuniCam dealer.

This camera is designed to be integrated into Dr. Suni and Prof. Suni software seamlessly. They are your complete solution for digital radiography system and digital Intro-oral camera.

1. Introduction to SuniCam

1.1 Camera specification

Image sensor	Sony ¼" progressive scan CCD
Number of effective pixels	659(H) x 494 (V)
Power supply	5V @ 440 mA provided by USB bus
Cable length	2.5 meters
Handpiece weight	~40g
Handpiece maximum dimensions	180 mm (L) x 26 mm (W) x 20 mm (H)
Depth of Field	10 mm ~ 45mm
Type of Focus	Fixed for Intraoral
Field of View	56 degrees
Frame rate	Up to 30 frames per second
Live video resolution	Up to 640x480
Still image resolution	Up to 1280x960
Light source	9 white LEDs

Features:

1. Integrated still image capture buttons.
2. LED light source ON/OFF control button

1.2 System Requirements

SuniCam is designed for 32-bit operating systems and can be installed on your existing network running Windows 98 or higher.

Minimum System Requirement

- Pentium 200MHz or higher
- 64MB RAM
- Windows /98
- CD-ROM drive
- 16-bit color video with the resolution display of 1024 X 768
- Available USB port

1.3 SuniCam System Component List

- USB Camera handpiece
- 2.5 Meter USB cable with two type "A" connectors
- CD-ROM containing the camera driver and the SuniCam utility software
- Packet of camera sheaths.

2. System Setup

2.1 Camera features

USB cable should be plugged as shown in Figure 1. There are two snapshot buttons (Front View and Back View in Figure 1), one on the front-side, the other on the back-side. The two buttons serve the same purpose, offering convenience in getting a still image during your practice. The camera will remain ON as long as the USB cable is plugged to the PC and camera. The LED light on and off button serves to turn on the lights. Turn off the LED light when the camera is not in use.

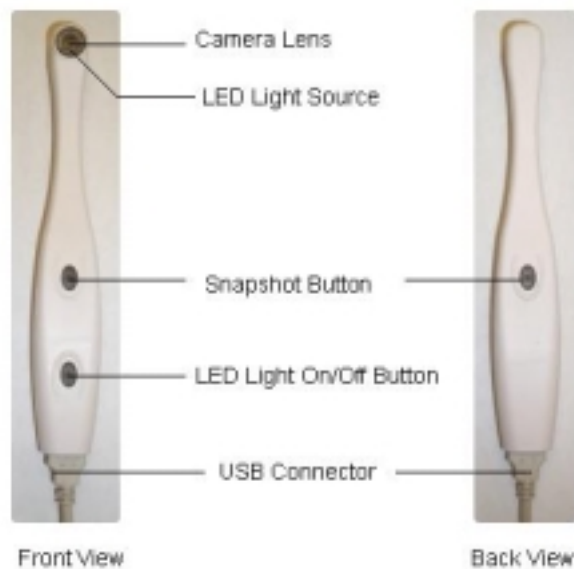


Figure 1. Picture of Suni USB camera

2.2 Set up the camera hardware



Figure 2. Picture of USB connector

In the component kit, you will find a 2.5 Meter long USB cable with two type “A” connector on both ends, as shown in Figure 2.

Plug one end of the USB cable to the USB port on the PC. Plug the other end of the USB connector to the camera handpiece. This will complete the hardware setup.

2.3 Install the camera driver



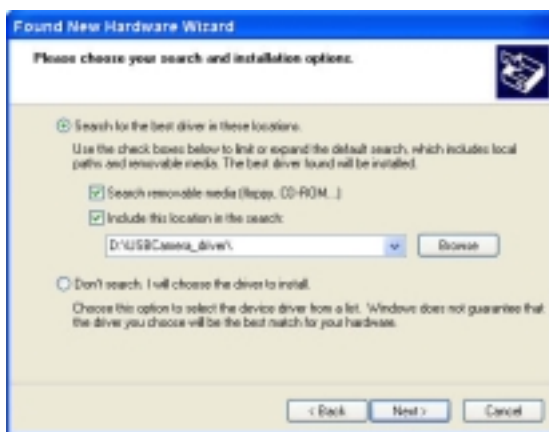
Step 1:

Plug the SuniCam USB camera in the USB port on your computer. WinXP will detect the USB camera and attempt to load the driver for it.



Step 2:

A found New Hardware window will appear. Insert “ SUNI USB Camera Software” CD in your optical drive. Chose “ Select from a list or specific location (advanced)” option, then click “Next”.



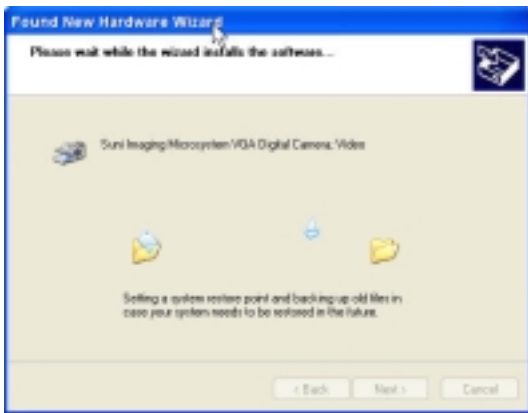
Step 3:

The “ Please choose your search and installation options” dialog appears. Select “ Search for the best driver in these locations”. Check both boxes “ Search removable media (Floppy, CD-Rom...)” and “ include this location in the search:”. In the area provided, type” D:\SuniUSB_driver” (If your CD-Rom drive is drive D:).



Step 4:

In the window "... has not passed Windows Logo testing to verify its compatibility with Windows XP...", click "Continue Anyway".



Step 5:

Window XP will find the "Suni Imaging Microsystem VGA Digital Camera Video" driver and will install it.



Step 6:

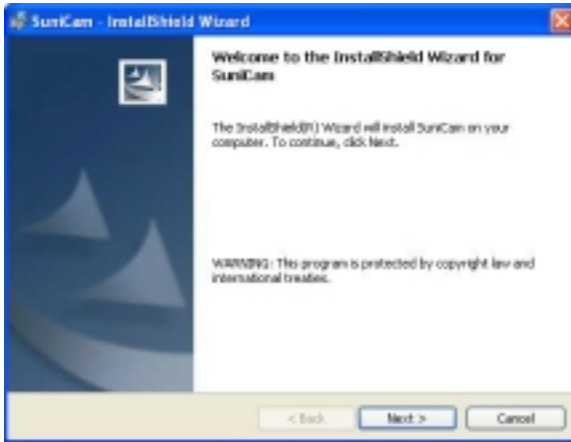
The next dialog will let you know that the driver has completed installing. Click "Finish" to finalize the installation.

Note:

The driver installation guide is intended for WinXP. The steps are similar for Win98, Win98SE, ME and 2000.

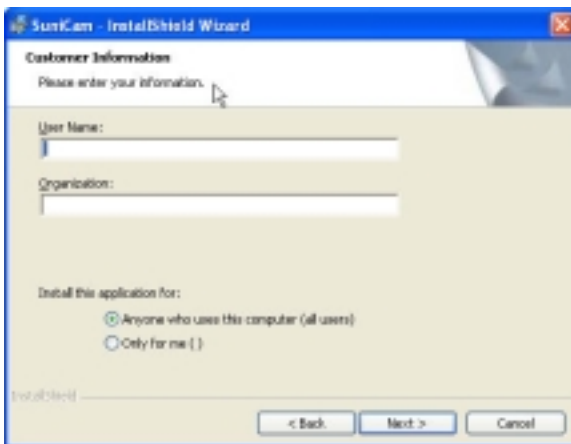
2.4 Install SuniCam Utility Software

Insert SuniCam Utility software CD in your CD drive. It will autorun and start the installshield wizard. If it doesn't, browse to the CD and click Setup.exe to start the installation wizard.



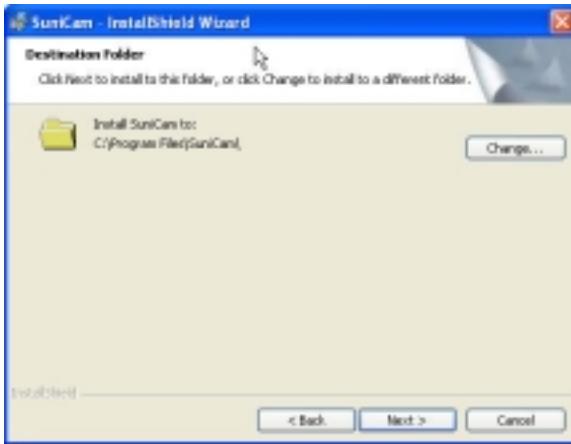
Step 1

This is the first screen when installshield starts. It will install SuniCam utility program on your computer. Click "Next".



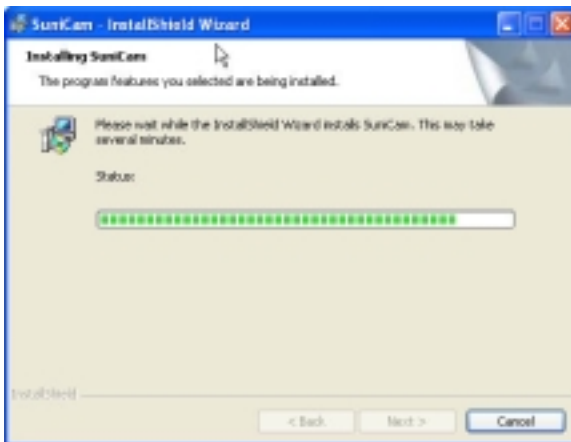
Step 2

Input your user name and company name in the appropriate field. Click "Next".



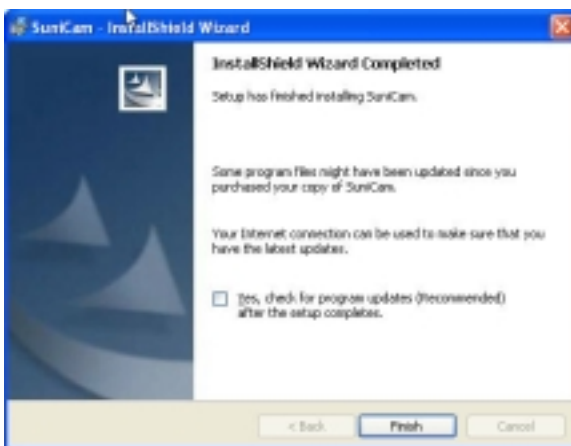
Step 3

The default folder for SuniCam utility program is C:\Program files\SuniCam. If a different path is preferred, browse to that directory. Then click “Next”.



Step 4

The setup program will proceed with the installation and copy the appropriate files to your computer. Click “Next”.



Step 5

Setup has finished installing SuniCam. Click “Finish”.

Note: Either unplug the USB cable at the USB camera end and plug it back in or restart your computer to complete the installation of the software.

2.5 Installing DirectX9.0

You need DirectX version 7.0 or higher to run this software optimally. DirectX is a Microsoft program designed to run and display multimedia applications such as video. It enables high performance in these applications. If you experience degraded performance of SuniCam utility software, you may need a newer version of DirectX to solve the problem.

To check which version of DirectX is currently installed on your machine, click **Start ->Run**. In the area provided, type **dxdiag**, as shown in Figure 3.

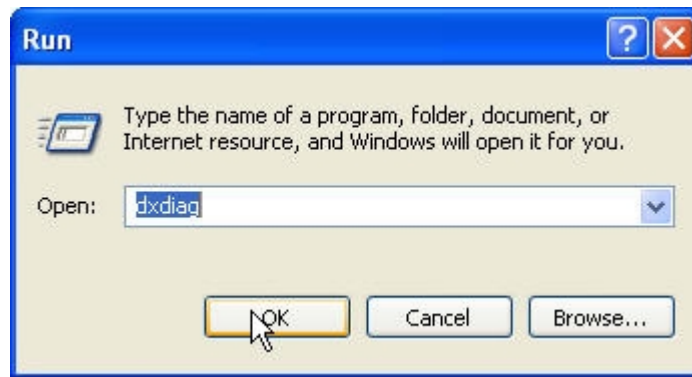


Figure 3. Run DirectX Diagnostic Tool

Clicking OK in Figure 3 will bring up the DirectX Diagnostic Tool window (Figure 4). This tool tells the version of DirectX on your computer. For example, this particular computer has DirectX is 8.1 on it. If your DirectX version is lower than 7.0, you need to install DirectX9.0 from the CD.

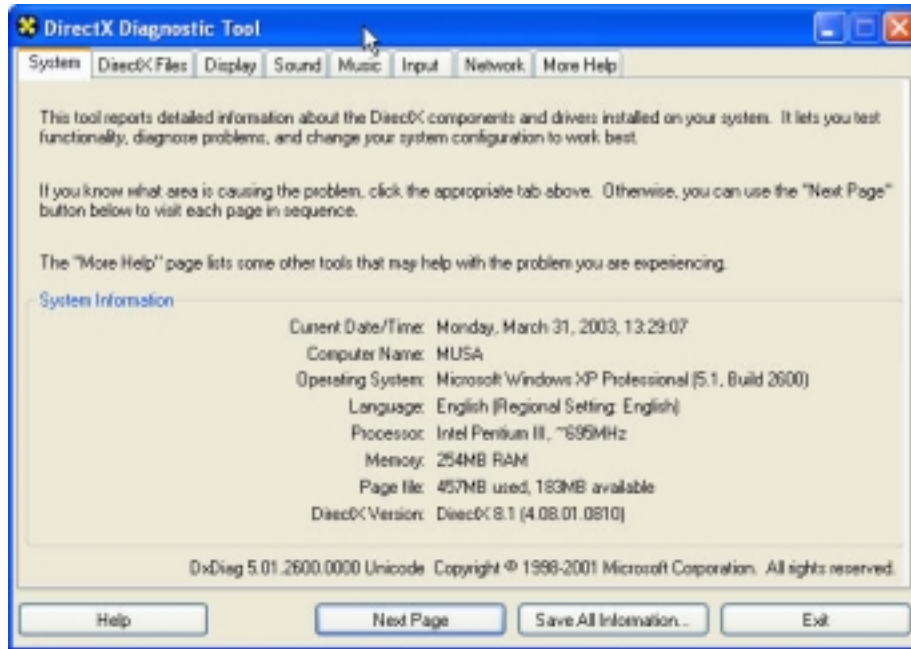
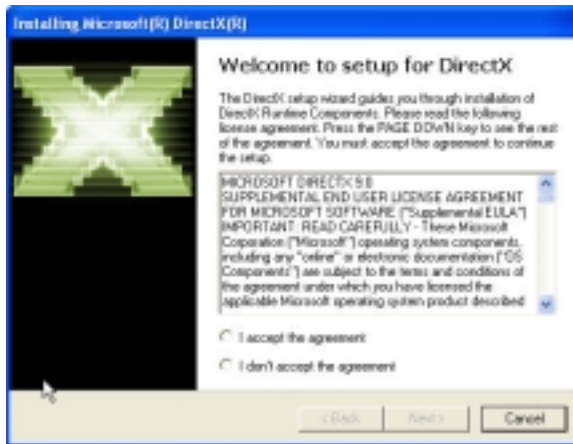


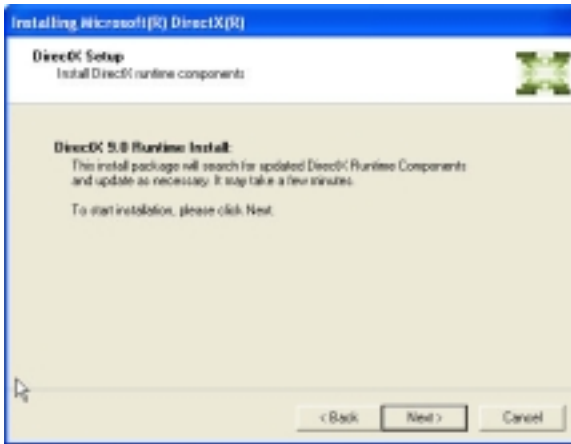
Figure 4. DirectX Diagnostic Tool

To install DirectX9.0, insert the SuniCam CD in your CD_ROM drive and browse to DirectX9.0_redist folder, then double click **setup.exe**. Follow the steps below to install DirectX9.0.



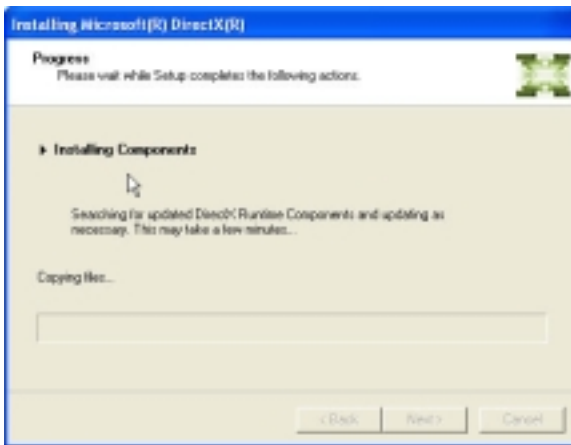
Step 1

Setup will try to install Microsoft DirectX9.0 on your computer. If you accept the agreement, click "Next".



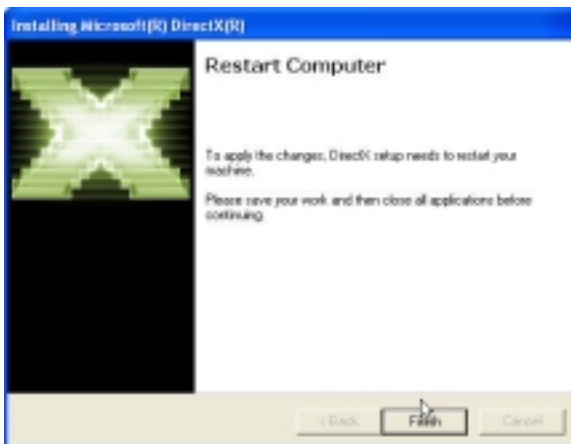
Step 2

Click "Next".



Step 3

The setup program will proceed with the installation.



Step 4

Setup has finished installing DirectX9.0.

Click "Finish".

You need to restart your computer to apply the change.

3.1 Launch the utility software

The installer will create a shortcut of **SuniCam** utility program on your desktop. Start the program by double clicking the desktop icon or go to Start -> Programs ->SuniCam.

3.2 Operation Procedure

These are the steps for correct daily operation of the camera system:

1. After starting Windows, plug the USB connector into the camera housing.
2. Insert the new camera sheath over the camera, making sure the transparent part of the sheath is facing the lens and properly placed.
3. Double click the desktop icon of “SuniCam” to launch the software.
4. Turn on the LED light by pressing the LED ON/OFF button. See Figure 1 for location of button.
5. Follow the procedure outlined in section 3.3 for various modes of operation.
6. Once you finish using the camera, close the SuniCam utility program.
7. Unplug the USB cable from the camera.
8. Remove the used sheath and discard. **Do not reuse sheath.**
9. The camera may be disinfected with alcohol or other disinfectant agent by wiping. Do not autoclave camera or immerse camera in any liquids. Doing so will void the warranty. (See safety and handling instructions.)
10. Turn off the LED lights after use.

Important! Un-plugging the camera while the Suni utility program is running will result in incorrect operation of the software. Always close the SuniCam utility program before unplug the USB cable from the camera.

3.3 Operate the Suni utility software

3.3.1 Turn the camera on and off

There is no on/off power switch for the SuniCam Camera. Plug the USB cable on the camera and the PC, the camera is turned on automatically. Turn on the camera light by pressing the appropriate button (Refer to Figure 1). Turn off the light when the camera is not in use.

3.3.2 Set up the live video preview

After you opened the program, a preview window will be present in the main window as shown in Figure 5. Real time live video will be displayed. The SuniCam USB camera has fixed focus lens. As you preview the video, focus by adjusting the distance of the lens to the imaging object until the image is clear.

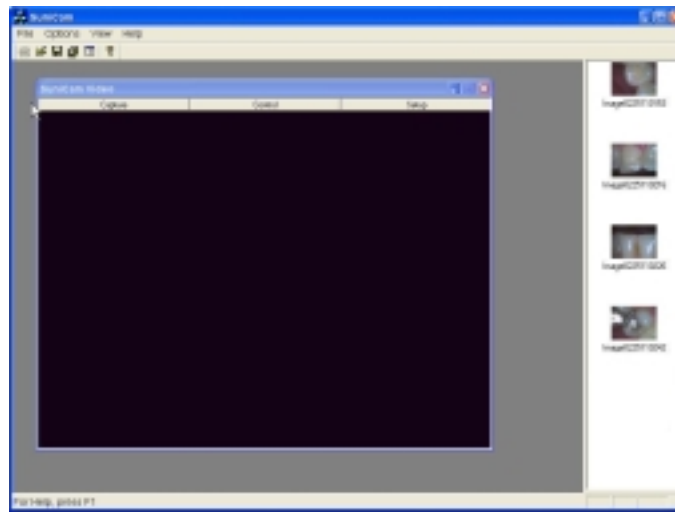


Figure 5. SuniCam Program and Preview window

There are three buttons on the top of the preview window, **Capture, Control and Setup**. Each of the buttons is explained below:

Capture button is explained in Section 3.3.3 under Capture the snapshot.

Control button offers a list of camera control features as displayed in Figure 6.

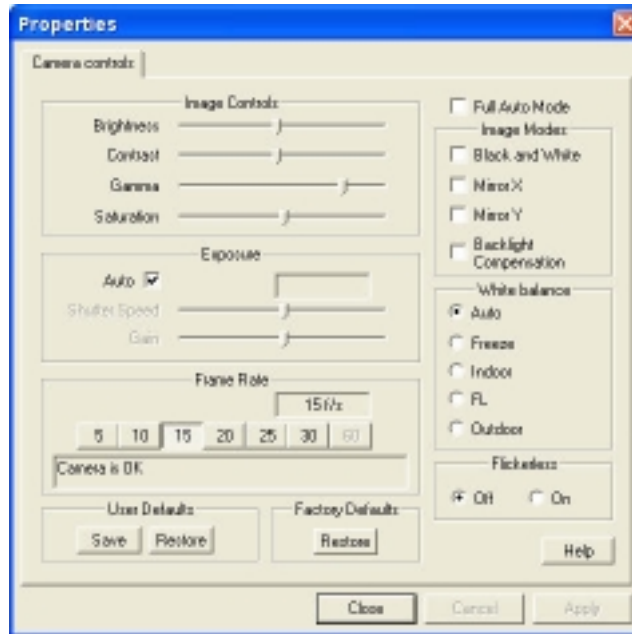


Figure 6. Camera control property

Image control allows for adjustment of brightness, contrast, gamma value and saturation of the video stream and still image.

Exposure of the camera was controlled by the shutter speed and Gain. If set to **Auto**, the exposure is determined by the camera automatically.

Frame rate means the number of video frames per second (f/s). It is adjustable in a range of 5f/s, 10f/s, 15 f/s, 20f/s, 25f/s and 30f/s.

Restore button under user default will retrieve a last saved setting for overall camera controls. The factory default setting is recalled and loaded when restore button under factory defaults is clicked. The factory default setting, however, is not changeable by the end user.

If **full Auto Mode** is selected, all the camera control options become automatic.

If a Black and white video or image is preferred, check the Black and white option under **Image Modes**. **Mirror X** will display the video and image in a horizontally flipped

manner. Likewise, **Mirror Y** will display the video and image in a vertically flipped manner. **Backlight compensation** will adjust the exposure for an object when its background is too bright.

White balance corrects the colors for video and images so that an object will show its true color under a variety of lighting conditions.

Occasionally, there are horizontal zebra lines on the images when there is only one lighting source and the source is not very bright. Check "off" under **Flickerless** when this happens.

The resolution of video and still image can be selected if click on **Setup button**.

SuniCam software supports 640x480, 320x240 and 160x120 resolutions for live video streams. For still image resolutions, 1280x960, 1024x768, 800x600, 640x480, 320x240 and 160x120 are supported.

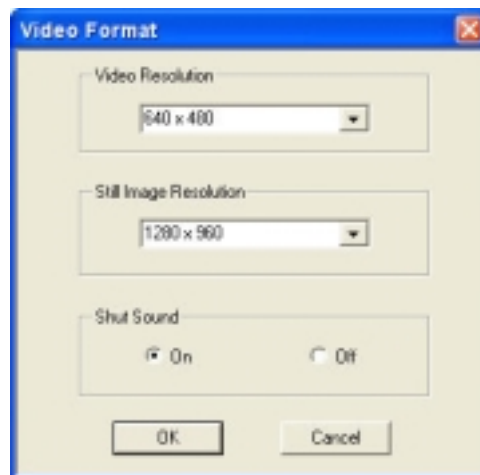


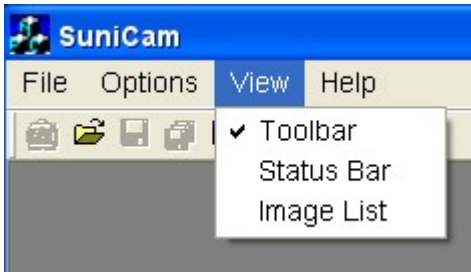
Figure 7. Video and image resolution selection

Shutter sound can be switched on or off by clicking the on/off radio button.

3.3.3 Capture the snapshot

A still image can be captured from both the SuniCam software and the camera handpiece. On the handpiece there are two snapshot buttons (see Figure 1), one on the front and one on the backside. They serve the same purpose, offering convenience of getting a still image.

Position the camera headpiece at a desired image view, click the **capture** button on the preview window or press the snapshot button on the handpiece. The captured image will be placed in the thumbnail window on the right side of the program window. Each of the captured images will be given a name automatically by the camera program.



The thumbnail window can be toggled on or off by selecting View -> Image List

Figure 8. Thumbnail window on/off

3.3.4 Open existing images

All the images previously saved in C:\Windows\temp\SuniCamImages will be recalled and loaded in the thumbnail window when the program starts.

To open images from directories other than the one mentioned above, choose File ->Open. A dialog box (Figure 9) will appear.

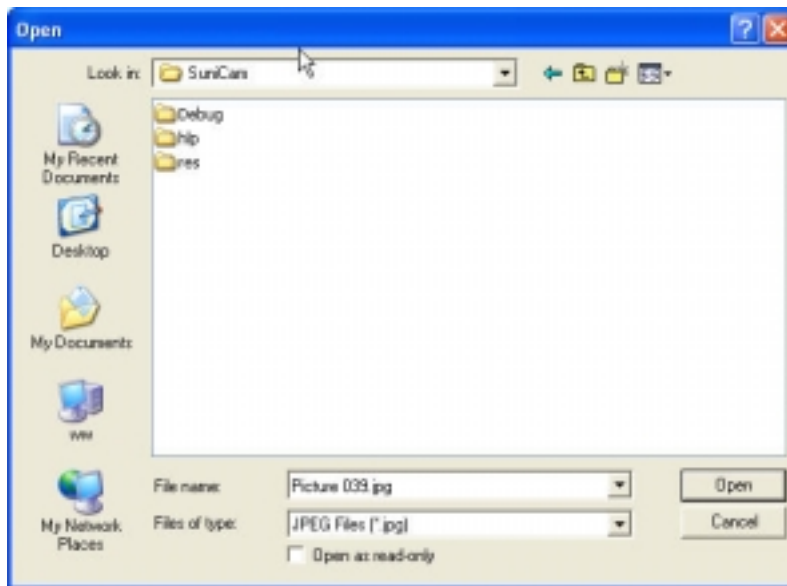


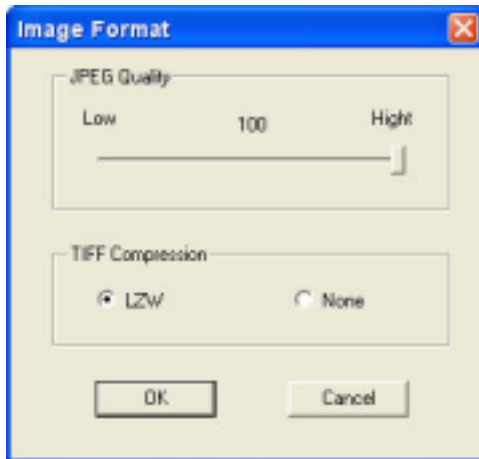
Figure 9. File Open Dialog

You can browse to the proper directory and open image files. Available file formats are: JPEG, bitmap and TIFF.

3.3.5 Save the images

To save an image, highlight the image in the main window and choose **File-> Save as** option from the menu bar. Alternatively, you can save an image by highlighting the thumbnail image, clicking the right mouse button and selecting **Save as**. Images can be saved in one of the three format : JPEG, bitmap and TIFF.

More options are available for JPEG or TIFF format under **Options-> image format** as shown in figure 10. The quality of a JPEG image can be adjusted on the scale of 0-100 by moving the slider in Figure 10. 100 gives the lowest compression ratio and thereby the highest JPEG image quality. When TIFF image format is desired, there are two further options : LZW compression or no compression. LZW compression usually gives slightly smaller file size.



More options are available for JPEG and TIFF formats

Figure 10. More on Image format

Images in the thumbnail bank can be saved or deleted by right mouse click. If there are any images left unsaved upon closing the program, the user will be presented with a dialog (Figure 11), prompting whether to save these images and to which folder.

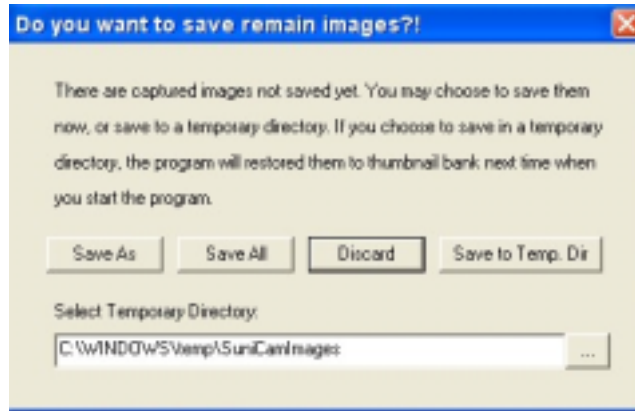


Figure 11. Save images

“**Save as**” gives you the option to save each image in a selected folder you desired. “**Save All**” gives you the option to save all the thumbnail images into one designated folder with the default image names. “**Discard**” will discard all the images. “**Save to Temp Dir**” will restore the image data in the default temp directory : C:\Windows\temp\SuniCamImages (you have the option to change the path of this directory). Next time when you start SuniCam program, these images in the default directory will be available in the thumbnail bank.

3.3.6 Work with still images

All the images captured will be shown as icons in the thumbnail bank. To enlarge it to full size, you need to select the image and double click the icon (Figure 12). If the main window is not large enough for the image, a “hand” symbol will appear, you can pan the image within the main window.

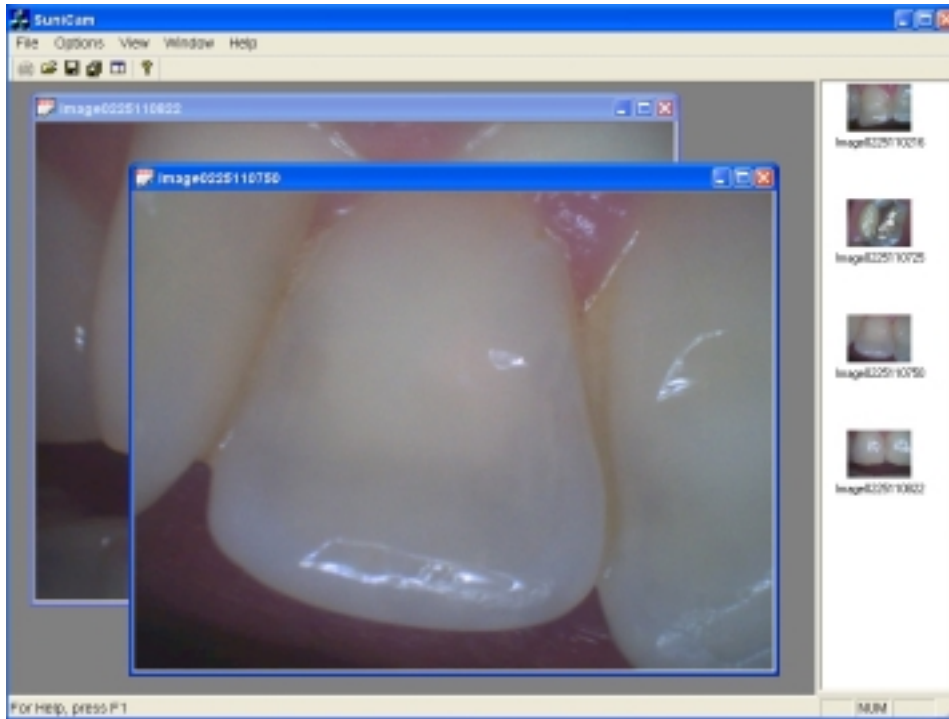


Figure 12. Still image manipulation

All images with **bitmap** format in the default directory (C:\windows\temp\SuniCamImages) will be loaded to the thumbnail window when the program starts.

Use camera Sheaths

The SuniCam System uses disposable sheaths to ensure proper hygiene and to protect against infectious disease. The sheaths are intended for a one-time use and are to be disposed after use.

Before using the intraoral camera, insert a new sheath, making sure the clear or transparent portion of the sheath is placed properly over the lens. After use of the camera in a patient's mouth, remove the sheath from the camera and properly dispose the used sheath. A new sheath shall be used with each new patient.

A limited sample of SuniCam sheaths are supplied with your SuniCam system. Additional sheath may be obtained through your dealer or you may contact Banta Healthcare for additional sheaths. (800-215-5464, www.bantahealthcare.com)

SAFETY AND HANDLING INSTRUCTIONS FOR THE DIGITAL CAMERA SYSTEM

IMPORTANT: Disconnect camera from USB cable before performing any cleaning.

Maintenance:

Components of SuniCam are made with high quality materials. No specific maintenance of the system is required. Normal care and maintenance will result in many years of service. The external surfaces of the USB camera should be kept clean by wiping with a slightly alcohol damp cloth occasionally. Do not immerse the camera in any liquids or disinfectants. To clean the lens surface, use a cotton Q-tip moistened with rubbing alcohol and gently wipe the lens surface, wait till it dries.

Troubleshooting:

Every precaution has been taken to ensure that your SuniCam will function properly. All components are pre-tested in your system before shipping.

Should you experience difficulty, do the following before contacting your sales representative. Be sure to be ready to describe your problems in detail, including any error messages that might be displayed.

- Although it seems obvious, you should always check to ensure that all connections are securely made, and that the power to your computer and monitor is turned on.
- Do not open your camera and attempt to alter internal connections. The camera should only be serviced by the manufacturer. It contains no user serviceable parts.

Operating Conditions:

This equipment is rated for continuous use.

Operating Temperature and Humidity 0 °C to +40 °C with a RH of 30-75%.

This equipment is not suitable for use in the presence of flammable mixtures.

Using the System:

The product shall be used in accordance to the directions and recommendations in the User Guide. User shall make no attempt to modify or alter the equipment, or use this equipment other than its intended design.

Explanation of symbols:

Symbols in the SuniCam Label identify the product as having met requirements within the US and for International markets. The “CE” symbols are examples of this type mark. Other symbols provide technical or other information.

EMC Statement:



This symbol indicates that this product is Type BF Equipment.

Type II Class Equipment

Accessories equipment connected to the analog and digital interfaces must be certified to the respective IEC standards (i.e. IEC 950 for data processing equipment and IEC 601-1 for medical equipment.) Furthermore all configurations shall comply with the system standard IEC 601-1-1. Everybody who connects additional equipment to the signal input or signal output configures a medical system, and is therefore, responsible that the system complies with the requirements of the system standard IEC 601-1-1. If in doubt, consult the technical services department or your local representative.

This equipment has been tested and found to comply with the limits for medical devices to the IEC 601-1-2:1994. These limits are designed to provide reasonable protection against harmful interference in a typical medical installation. This equipment generates, uses and can radiate radio frequency energy and, if not installed and used in accordance with the instructions, may cause harmful interference to other devices in the vicinity. However, there is no guarantee that interference will not occur in a particular installation. If this equipment does cause harmful interference to other devices, which can be determined by turning the equipment off and on, the user is encouraged to try to correct the interference by one or more of the following measures.

- ❑ Reorient or relocate the receiving device
- ❑ Increase the separation between the equipment.
- ❑ Connect the equipment into an outlet or a circuit different from that to which the other device(s) are connected.
- ❑ Consult the manufacturer or field service technician for help.

Follow local governing ordinances and recycling plans regarding disposal or recycling of device components.

LIMITED WARRANTY

(1) Suni Imaging Microsystems, Inc. warrants to the original purchaser that the SUNI-CAM Intraoral Camera (the "Product") will be free from material defects in material and workmanship for a period of 12 months from the date of original purchase from Suni Imaging Microsystems, Inc. or its authorized distributor (the "Warranty Period"). During the Warranty Period, Suni Imaging Microsystems, Inc. will repair Product not meeting the foregoing Limited Warranty (or at its option, replace such Product with a new or reconditioned Product) at no charge. Any replacement or repaired Product will be warranted for the remainder of the original Warranty Period. All Products or parts replaced become Suni Imaging Microsystems, Inc.'s property. If neither repair or replacement is reasonably available, Suni Imaging Microsystems, Inc. may elect instead, at its option, to accept return of the Product and refund the purchase price of the Product. This Limited Warranty only covers the hardware components of this Product. This Limited Warranty does not cover, and Suni Imaging Microsystems, Inc. is not responsible for, any software that may be used with this Product. This Limited Warranty extends only to the original purchaser and is not transferable to anyone else. Fill out the bottom of this Limited Warranty and mail a copy along with a copy of the bill of sale to the address indicated.

(2) To obtain warranty service you must: (a) obtain a return materials authorization number (RMA#) from Suni Imaging Microsystems, Inc., and (b) deliver the Product, in accordance with the instructions provided by Suni Imaging Microsystems, Inc., along with proof of purchase in the form of a copy of the bill of sale including the Product's serial number, contact information, RMA# and detailed description of the defect, freight prepaid, in either its original package or packaging providing the Product with a degree of protection equivalent to that of the original packaging to the distributor whom you purchased the Product from or if purchased from the factory to Suni Imaging Microsystems, Inc. Suni Imaging Microsystems, Inc. is not responsible for any damage to the Product during transportation. Be sure to remove all parts, options, holders and attachments prior to delivering the Product. Suni Imaging Microsystems, Inc. is not liable for any loss or damage to such items.

(3) This Limited Warranty does not cover any consumables (such as sheaths) supplied with this Product, cosmetic damage, damage due to (a) acts of God, accident, misuse, abuse, negligence, abnormal or unusually heavy use, causes external to the Product such as but not limited to excessive heat or humidity, or modifications to this Product, (b) improper installation, operation, testing, or maintenance of this Product, (c) power failure or connections to improper voltage supply, or (d) attempted repair by any party other than Suni Imaging Microsystems, Inc. This Limited Warranty does not apply when malfunction results from the use of the Product in conjunction with accessories, products or ancillary or peripheral equipment not provided by Suni Imaging Microsystems, Inc., or where it is determined by Suni Imaging Microsystems, Inc. that the Product itself complies with the Limited Warranty. This Limited Warranty does not apply if the Product: is damaged by Electrostatic Discharges (ESD); is damaged as a result of autoclaving the camera; is immersed in any liquid such as disinfectants, alcohol or any other liquid; sustains damage to internal components; is damaged as a result of shock impact (such as dropping the Product); or is damaged as a result of clamping the

Product with hemostats or other utensils that deform, dent or damage the camera enclosure. This Limited Warranty is invalid if the Product is used for purposes other than the use intended by Suni Imaging Microsystems, Inc. This Limited Warranty is invalid if the factory-applied serial number has been defaced, altered, obliterated or removed from the Product.

(4) Suni Imaging Microsystems, Inc. shall not be liable under this Limited Warranty if Suni Imaging Microsystems, Inc. (a) cannot reproduce the alleged defect in its testing and examination of the Product or (b) discovers that the Product is excluded from coverage under this Limited Warranty for any reason.

(5) Repair, replacement or return/refund as provided under this Limited Warranty is the sole and exclusive remedy of the customer for any breach thereof.

(6) TO THE FULL EXTENT ALLOWED BY LAW, THE FOREGOING LIMITED WARRANTIES AND REMEDIES ARE EXCLUSIVE AND ARE IN LIEU OF ALL OTHER WARRANTIES, TERMS, OR CONDITIONS, EXPRESS OR IMPLIED, EITHER IN FACT OR BY OPERATION OF LAW, STATUTORY OR OTHERWISE, INCLUDING WARRANTIES, TERMS, OR CONDITIONS OF MERCHANTABILITY, FITNESS FOR A PARTICULAR PURPOSE, SATISFACTORY QUALITY, CORRESPONDENCE WITH DESCRIPTION, AND NON-INFRINGEMENT, ALL OF WHICH ARE EXPRESSLY DISCLAIMED. SUNI IMAGING MICROSYSTEMS, INC. NEITHER ASSUMES NOR AUTHORIZES ANY OTHER PERSON TO ASSUME FOR IT ANY OTHER LIABILITY IN CONNECTION WITH THE SALE, INSTALLATION, MAINTENANCE OR USE OF ITS PRODUCTS.

(7) TO THE FULL EXTENT ALLOWED BY LAW, SUNI IMAGING MICROSYSTEMS, INC. ALSO EXCLUDES FOR ITSELF AND ITS SUPPLIERS ANY LIABILITY, WHETHER BASED IN CONTRACT OR TORT (INCLUDING NEGLIGENCE), FOR INCIDENTAL, CONSEQUENTIAL, INDIRECT, SPECIAL, OR PUNITIVE DAMAGES OF ANY KIND, OR FOR LOSS OF REVENUE OR PROFITS, LOSS OF BUSINESS, LOSS OF INFORMATION OR DATA, LOSS OF USE OF PRODUCT, OR OTHER FINANCIAL LOSS ARISING OUT OF OR IN CONNECTION WITH THE SALE, INSTALLATION, MAINTENANCE, USE, PERFORMANCE, FAILURE, OR INTERRUPTION OF THIS PRODUCT, EVEN IF ADVISED OF THE POSSIBILITY OF SUCH DAMAGES, AND LIMITS ITS LIABILITY TO REPLACEMENT, REPAIR, OR REFUND OF THE PURCHASE PRICE PAID FOR THE PRODUCT BY CUSTOMER, AT SUNI IMAGING MICROSYSTEMS, INC.'S OPTION. THIS DISCLAIMER OF LIABILITY FOR DAMAGES WILL NOT BE AFFECTED IF ANY REMEDY PROVIDED HEREIN SHALL FAIL OF ITS ESSENTIAL PURPOSE. Any implied warranty which cannot be disclaimed shall be limited in duration to the minimum duration required by applicable law or the Warranty Period, whichever is greater. This Limited Warranty gives you specific legal rights and you may have other rights, which vary, from jurisdiction to jurisdiction. Some jurisdictions do not allow the exclusion or limitations of special, incidental or consequential damages or limitations on how long a warranty lasts, so the above exclusion and limitation may not apply to you.

(8) This Limited Warranty shall be governed by the laws of the State of California, U.S.A. excluding its conflicts of laws principles and excluding the United Nations Convention on Contracts for the International Sale of Goods.

LIMITED WARRANTY

Registration Information Sheet

Suni Imaging Microsystems, Inc.

6840 Via Del Oro

San Jose, CA 95119

408-227-6698

www.suni.com

Date Purchased: _____ Serial (s)# _____

Name: _____

Address: _____

City: _____

State: _____

Zip Code: _____