

# sunimac

## MINIMUM SYSTEM REQUIREMENTS

PROCESSOR	INTEL
OS	MAC OS 10.6 or higher
HARD DISK	20 GB
DISPLAY SETTINGS	1024 x 768 (minimum)
RAM	4 GB
NETWORK	100 Mbs
SENSORS	SuniRay Dr. Suni Plus
INTRAORAL CAMERA	SuniCam II  Contact Suni Medical Imaging for complete list of compatible cameras.

# sunimac



Digital Imaging with the Power and Style of a Mac

## SCHEDULE A DEMO TODAY

[sales@suni.com](mailto:sales@suni.com)

USA and Canada | International  
1 408 227 6698 | +32 58 317 464

6840 Via Del Oro, Suite 160  
San Jose, CA 95119

[www.suni.com](http://www.suni.com)

Revision A 2/2014

**suni**  
Born in Silicon Valley

USA and Canada | International  
1 408 227 6698 | +32 58 317 464

6840 Via Del Oro, Suite 160  
San Jose, CA 95119

[www.suni.com](http://www.suni.com)



## SuniMac: Digital Imaging with the Power and Style of a Mac

SuniMac is an intuitive, comprehensive imaging software package designed to capture, enhance, and display digital x-rays and intraoral images with the power and style of a Mac. A feature-rich digital imaging solution for the dental office, SuniMac gives you access to powerful enhancement tools and streamlined customization and file management options, allowing you to get the most out of your SuniRay or Dr. Suni Plus sensors.

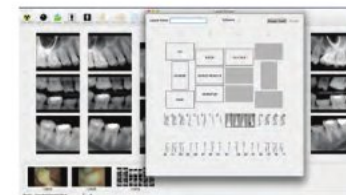
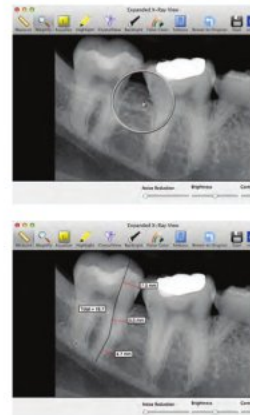
**sunimac** is a complete software package that runs on any Intel-based Mac computer running OS 10.6 or higher. An intuitive program that helps you streamline the radiographic process, SuniMac provides a comprehensive set of easy-to-use imaging tools that simplify capturing and managing digital images, allowing you to focus on your patients.

- Attach notes to a single image or layout
- Send images to email directly from SuniMac
- Automatic database backup
- Use as standalone program or bridge with PM software

## Your Mac-Based Digital Imaging Solution

Sharp, clear images and powerful image enhancement tools aid in precise patient diagnoses and effective patient communication.

- Crystal View
- Histogram Equalization
- Measurement Tool
- Adjust Brightness and Contrast
- False Color
- Emboss
- Magnify
- Highlight
- Full-Screen Mode



SuniMac is a full-featured image capture solution for the dental office. SuniMac captures x-rays using SuniRay or Dr. Suni Plus sensors and can also be used to store and manage patient images and files. For more information and to request a download, visit:

[www.suni.com](http://www.suni.com)